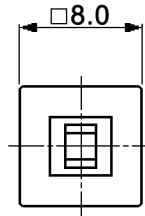
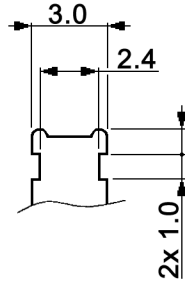
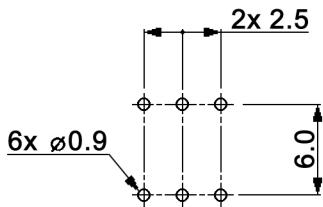


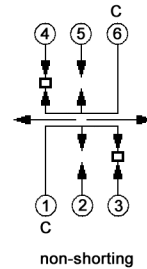
DETAIL A



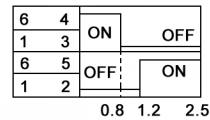
HOLE LAYOUT TOP VIEW ± 0.05



CIRCUIT DIAGRAM
C: COMMON PIN



TIME LAG DIAGRAM



for momentary only

Compliance: RohS II (2011/65/EU)

Tolerances: up to 10: ± 0.20 mm above 10-50: ± 0.30 mm		Date	Name
		01/06	dr
Table "y"	01/15	dr	
Revised	11/13	dr	
Specifications	10/13	dr	
Gold plating	05/12	dr	
Rename	04/12	dr	
Revised	02/12	dr	
Revised	09/11	dr	
Modifications	Date	Name	

MP22E08x-O-y-z

knitter-switch

30 07 54

Page

1/2

Specifications:

Contact rating: 0.1A, 30V DC
 Contact resistance: 70mOhm max., after life cycle and humidity test 150mOhm max.
 Insulation resistance: 100MOhm min., after life cycle test min. 10MOhm
 Dielectric strength: 500V AC for 1 minute
 Operating temperature: -10°C to +60°C
 Mechanical life: 10 000 cycles
 Soldering conditions: 260 +/-5°C, 5 +/-1sec; manual or dip-soldering only, no pre-heat
 Material: Spring: SWC, temper
 Case: PBT, black
 Housing: POM, white/black
 Stem: POM, white
 Contact plate: C1720
 Terminals: brass

x	Switching function	y	Operating force (gf)	Remark
empty	on - (on), momentary	060	60 +/-25	for momentary only
L	on - on, latching	150	150 +/-50	for momentary only
		empty	180 +/-80	for latching only
		350	350 +/-100	for latching only
		500	500 +/-100	for momentary only
		z	Contact / terminal surface	
		(empty)	silver plated over nickel	
		AU3	0.075µm gold plated over nickel	

Compliance: RohS II (2011/65/EU)

Tolerances: up to 10: ±0.20mm above 10-50: ±0.30mm		Date	Name	<h1>MPSA 22E08x-O-y-z</h1>
		01/06	dr	
		knitter-switch		<h2>30 07 54</h2>
				Page
				2/2
Modifications	Date	Name		